

Overview

Advantage Credit is committed to providing the highest level of security for our clients and their customers. In an effort to maintain this commitment, we will be disabling all Transport Layer Security (TLS) versions less than 1.2. Any request that is not using TLS 1.2 will be unable to connect to Advantage Credit after the transition is completed. This includes connections from web browsers logging in directly and API connections from vendors' servers.

While we understand that this transition may cause difficulty for some of our customers, our team is fully committed to ensuring that this causes as little disruption of service as possible and results in a highly secure environment for all transactions.

Timeline

To allow customers to verify their connections before release into production, we will initially disable TLS 1.0 and 1.1 in our test environment at the end of November 2017. TLS 1.0 and 1.1 will then be disabled in our production environment at the end of December 2017.

How to Avoid Disruption

To avoid disruption of service, we strongly advise all of our clients and their customers to verify their internal systems meet the minimum TLS 1.2 compatibility requirements. If clients or customers cannot meet TLS 1.2 protocol requirements, then access to Advantage Credit system will be impacted.

TLS 1.2 Compatibility requirements

Please reference the following list to determine what operating systems, web browsers, applications, and frameworks are compatible with TLS 1.2. The operating systems will require the minimum version of the web browser or application to be compatible.



NOTE: While this list references all systems compatible with TLS 1.2, Advantage Credit is only supported on Microsoft Windows operating systems using Internet Explorer v11+ or Google Chrome v30+.

Operating System Version:

- Windows 7
- Windows Server 2008 R2
- Windows 8
- Windows Server 2012
- Windows 8.1
- Windows Server 2012 R2
- Windows 10
- Windows Server 2016
- CentOS 6+/RHEL 6+
- Mac OS X 10.9+
- iOS 5.x +
- Android 5.x +

Web Browser:

- Internet Explorer v11+
- Internet Explorer Edge
- Google Chrome v30+
- Mozilla Firefox v27+
- Apple Safari v7+
- Opera v17+

Applications and Frameworks

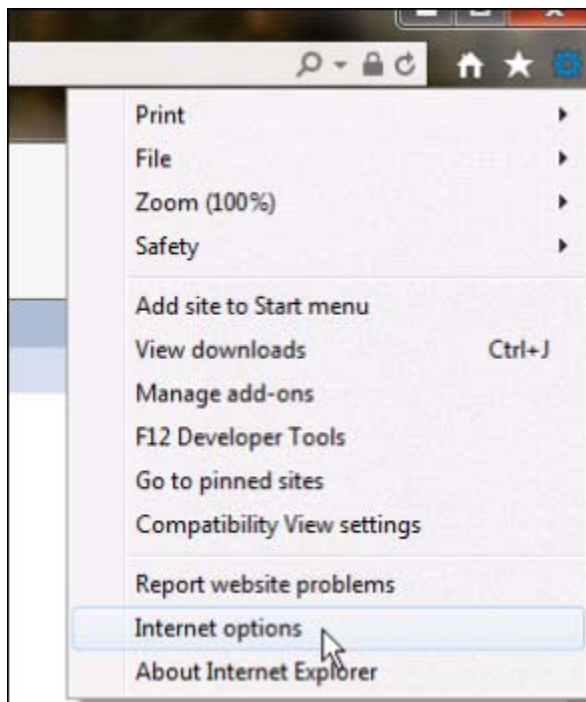
- OpenSSL 1.01+
- JDK 8 +
- .NET 4.6+
- Apache 2.2.23

How to Check TLS Version on a Web Browser

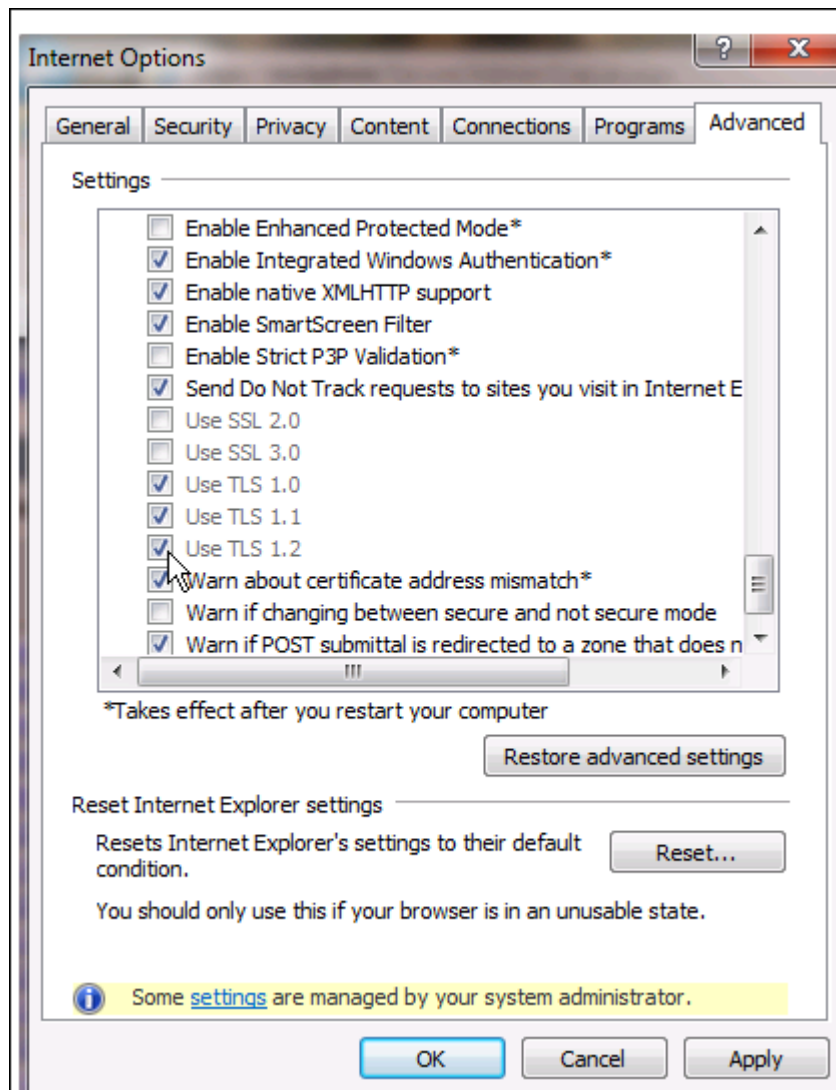
Please follow the below steps to determine if your current web browser version is enabled for TLS 1.2 protocols. Depending on your company's security settings, you may need to contact your IT department or systems administrator to make any necessary security changes.

Microsoft Internet Explorer v11

1. Open Internet Explorer
2. Select the gear icon at the top-right of the window, then navigate to Internet Options



3. Select the Advanced tab in the popup window that appears
4. Scroll down to the Security section, and confirm that the "Use TLS 1.2" box is checked

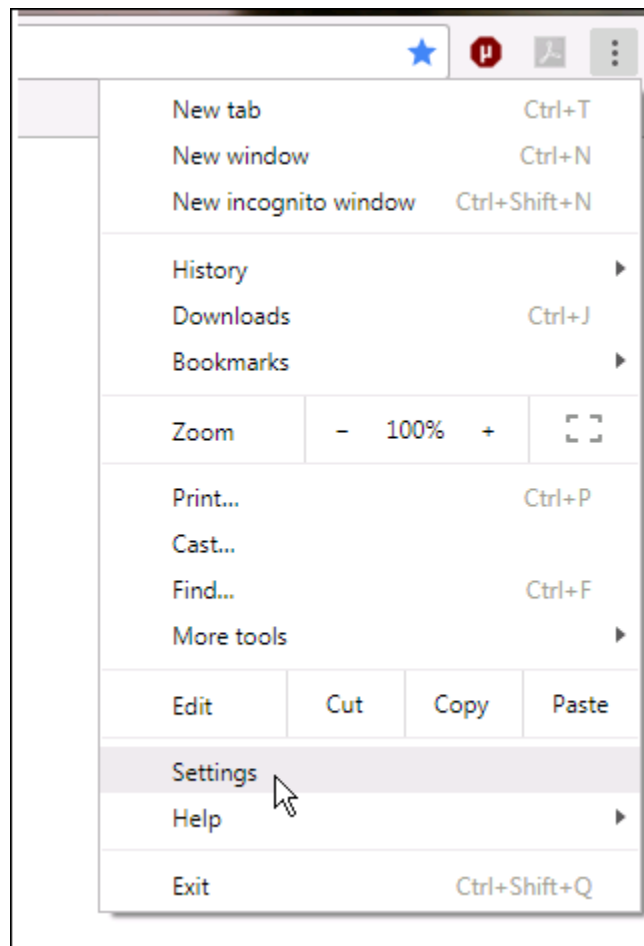


Advantage Credit

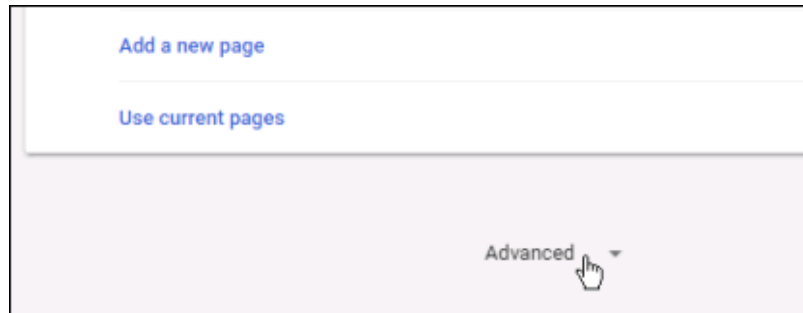
Credit Reporting Services
www.advcredit.com 800-670-7993

Google Chrome v30

1. Open Google Chrome
2. Select the options icon at the top-right of the window, then navigate to Settings



3. Select the Advanced link at the bottom of the page to open additional browser settings



4. In the System section, select Open proxy settings
5. Select the Advanced tab in the popup window that appears
6. Scroll down to the Security section, and confirm that the "Use TLS 1.2" box is checked

